



BOAT SALES

LAKELAND LEISURE ESTATES



Gematice II - Cruiser Stern

Price: £55,000

Key Features

Berths:	6
Length & Type:	55ft Cruiser
Year:	2006

Description

Welcome to the Gematice II, a masterpiece of elegance and comfort set to redefine your cruising experience. Built in 2006 by Heron Boat Builders, this 55ft Cruiser Stern boasts sophistication in every detail.

Step aboard and immerse yourself in luxury. From the moment you enter, the double glazed windows flood the interior with natural light, offering breath-taking views of your surroundings. With bow thrusters for effortless manoeuvrability and two swan hatches adding to the allure, the Gematice II is designed to captivate.

Indulge in the comfort of the Gematice II's spacious interior. With berths for 2 in the bedroom and additional sleeping space for 4, there's ample room for family and guests. The bedroom features a cross over bed, complemented by wardrobes, wall units, and drawers for all your storage needs. Built-in reading lights provide the perfect ambiance for relaxation.

Pamper yourself in the walk-through bathroom, complete with a full-size walk-in shower enclosure and a wash hand basin with a mixer tap. The cassette toilet ensures convenience, with two spare cassettes for extended journeys.

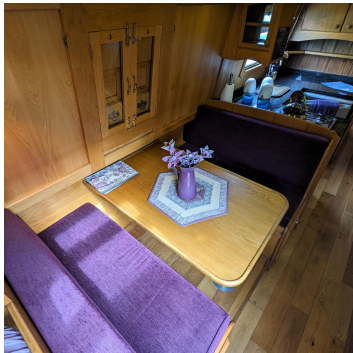
In the galley, culinary delights await. Adorned with a beautiful granite worktop, a sink with a mixer tap, a gas oven and hob, and a fridge, this kitchen is a chef's dream.

The dinette area offers both functionality and style. The Pullman dinette, with storage below, easily converts to a double bed, while a wardrobe adds practicality to the space.

The saloon of the Gematice II is a haven of relaxation. A spacious lounge area, larger than average, invites you to unwind with a sofa bed, stools, and a log burning stove. Storage and shelving are cleverly integrated, while a TV point ensures entertainment is always at hand. Delightful stable doors offer access to the well deck, seamlessly connecting indoor and outdoor spaces.

Powered by an Isuzu 35 engine, the Gematice II ensures smooth sailing with reliability at its core. With its last blacking in 2021, this vessel is meticulously maintained, ready to embark on new adventures.

Embark on a journey of luxury and serenity aboard the Gematice II. Whether cruising the waterways or moored in a tranquil setting, this vessel promises an unforgettable experience at every turn.



Disclaimer

Whilst every care has been taken in the preparation of these specifications, no guarantee is given or implied as to their accuracy. These particulars are intended only as a guide, and they do not constitute a term of any contract. Lakeland Leisure Estates Ltd advises prospective purchasers to obtain an independent survey from a qualified Marine Surveyor to satisfy themselves as to the condition of the craft.

Contact Us

Call: 07354902086

Email: greathaywood@lakelandleisureboatsales.co.uk

www.lakelandleisureboatsales.co.uk





Additional Specs

- **Berths:** 2 + 4
- **Length & Type:** 55ft Cruiser Stern
- **Year:** 2006
- **Builder:** Heron Boat Builders
- **Layout:** Bedroom / bathroom / kitchen / dining / lounge
- **Engine Type:** Isuzi 35
- **Last Blacking:** 2021
- **Boat Safety Certificate:** Feb 2025
- **Last Survey:** Not Known
- **Engine Hours & Service:** Serviced 2022
- **External covers:** Cratch
- **Internal cabin height:** 6' 6"
- **Hull Thickness:** 10mm
- **Electric supply:** Shoreline / Engine / 3Kw Inverter
- **Batteries:** 4 Leisure & 1 Starter
- **Hot water Supply:** Aldi Boiler
- **Cabin Heating:** Aldi Boiler via Radiators or Stove
- **Insulation:** Spray Foam
- **Gas Cylinders:** 2 x 13kg
- **Galvanic isolator:** Yes
- **Inspection hatch:** Yes
- **Side hatches:** Yes x2
- **Toilet/ Head Type:** Thetford Cassette
- **Water Tank Capacity:** 300 Ltrs
- **Fuel Tank Capacity:** 150 Ltrs
- **Bow Thrusters :** Yes

Disclaimer

Whilst every care has been taken in the preparation of these specifications, no guarantee is given or implied as to their accuracy. These particulars are intended only as a guide, and they do not constitute a term of any contract. Lakeland Leisure Estates Ltd advises prospective purchasers to obtain an independent survey from a qualified Marine Surveyor to satisfy themselves as to the condition of the craft.

Contact Us

Call: 07354902086

Email: greathaywood@lakandleisureboatsales.co.uk

www.lakandleisureboatsales.co.uk

