



BOAT SALES

LAKELAND LEISURE ESTATES



Lady Marjorie - Cruiser Stern

Price: £54,995

Key Features

Berths:	2
Length & Type:	68ft Cruiser Stern
Year:	1995

Description

Step aboard Lady Marjorie, a timeless 68ft cruiser stern narrowboat built in 1995, where the elegance of classic design meets modern living. Designed for comfort and function, Lady Marjorie offers a warm, inviting interior that blends traditional craftsmanship with thoughtful, contemporary updates. Perfect for serene holidays or full-time canal living, this well-maintained boat is a tranquil retreat on the water, ready to provide a cosy and beautiful living space for its next adventure.

The galley on Lady Marjorie is a masterclass in efficiency and style, offering everything you need for a comfortable life afloat. The space features a gas hob with four burners, complete with a grill and oven, allowing you to prepare anything from simple breakfasts to elaborate meals. A 12v fridge/freezer ensures your groceries stay fresh, while the spacious sink with its modern mixer tap makes washing up easy. The galley is also outfitted with generous storage cupboards that keep your essentials neatly tucked away. The extensive work surface provides ample room for meal preparation or even a hobby space, making the galley a welcoming and practical area for both cooking and leisure. It's a bright and functional part of the boat, designed to make life on the water as comfortable and convenient as possible.

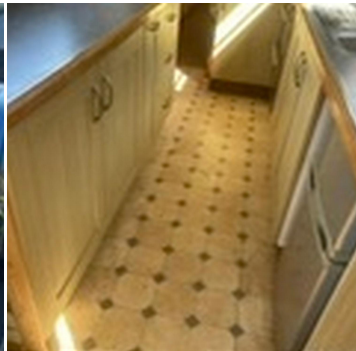
The heart of Lady Marjorie is her lounge, an inviting and relaxing space filled with natural light and character. Glass double doors open onto the front well deck, offering a seamless connection to the outdoors while flooding the space with daylight. Six single-glazed windows line the room, allowing panoramic views of the tranquil waters. Cosy evenings are assured by the presence of a multi-fuel stove, its warmth enhanced by two radiators powered by the efficient Webasto heating system. The freshly installed pine parquet floor adds a rich, timeless charm to the room, while sage-green vertical Georgian panels up to the gunwale create a soothing, classic atmosphere. With matching grey/blue blackout curtains, you can retreat into privacy when desired. Whether you're unwinding with a book or simply soaking in the calm of the waterways, this lounge serves as a comfortable and beautifully designed haven.

The master bedroom aboard Lady Marjorie offers a blend of practicality and restful ambiance. The fixed double bed, which has convenient storage beneath, makes intelligent use of space while ensuring comfort. An overhead shelf with a built-in USB charger adds a modern touch, providing easy access to charging for your devices. A full-length wardrobe offers ample storage for clothes, while a nearby radiator ensures the room remains warm and inviting. The bedroom's two windows allow in plenty of natural light during the day, and when it's time to sleep, the blackout curtains provide privacy and darkness for a restful night. This well-designed space makes the master bedroom a peaceful retreat, perfect for winding down after a day on the water.

The Boatman's Cabin on Lady Marjorie adds both charm and versatility, offering plenty of storage and an additional workspace. The cabin boasts a 6-foot-long unit featuring three large drawers and a cupboard, making it ideal for storing tools, personal items, or additional gear. A 5-foot worktop provides practical space that can serve as a desk or workspace, making this cabin a multi-purpose area perfect for hobbies, navigation prep, or simply extra storage. With its clever use of space, this cabin adds another layer of functionality to Lady Marjorie, while still keeping the traditional narrowboat aesthetic intact.

The bathroom on Lady Marjorie is thoughtfully designed to provide both comfort and practicality. A hip bath with an overhead shower offers the luxury of a soak or a quick rinse, making it versatile for both relaxation and convenience. The Thetford cassette toilet is easy to use and maintain, while the sink with a vanity unit provides useful storage for toiletries, keeping the space tidy and organized. An eye-level medicine cabinet adds extra functionality, ensuring that essentials are always within reach. With these features, the bathroom strikes a perfect balance between style and practicality, ensuring that you have everything you need for a comfortable life on the water.

Lady Marjorie is more than just a boat—she's a carefully crafted home on the water, offering warmth, comfort, and a unique connection to the waterways. Her thoughtful layout, modern amenities, and classic design elements make her an ideal choice for anyone seeking a life of peace and serenity afloat. Whether cruising the canals or moored in a scenic spot, Lady Marjorie provides a welcoming and elegant living space that's perfect for both long-term living and leisurely adventures.



Disclaimer

Whilst every care has been taken in the preparation of these specifications, no guarantee is given or implied as to their accuracy. These particulars are intended only as a guide and they do not constitute a term of any contract. Lakeland Leisure Estates Ltd advises prospective purchasers to obtain an independent survey from a qualified Marine Surveyor to satisfy themselves as to the condition of the craft.

Contact Us

Call: 07748036638

Email: saul@lakelandleisureboatsales.co.uk

www.lakelandleisureboatsales.co.uk





Additional Specs

- **Length/ Boat Style:** 68ft Cruiser Stern
- **Year Built:** 1995
- **Hull By/ Fit out by:** R W Davis
- **Layout stern to bow:** Boatmans
Cabin/Bathroom/Bedroom/Kitchen/Living Room
- **Engine and gearbox:** 3 Cylinder Lister Engine
- **Last Blacking & type:** March 2020
- **Inspection hatch and location:** Under stern deck
- **P/out or Cassette:** Cassette
- **Internal cabin height:** 6'
- **Last Survey:** March 2020
- **External Covers:** N/A
- **Batteries:** 1 x Starter 105amp, 3 x Leisure 1330amp
- **Electric Supply:** 240v shoreline, 12v, 2 x solar panels
- **Hot Water Supply:** 1 Kw Immersion and calorifier
- **Cabin Heating:** 5Kw webasto serviced in may 2024 by Starline marine, multi fuel stove
- **Central heating type:** Diesel webasto 5Kw water heater
- **Gas Cylinders No & type:** 2 x 13kg I rear gas locker
- **Water Tank capacity:** 450 litres
- **Fuel tank capacity:** 160 litres
- **Additional Info:** Professional exterior paint march 2020, new flooring 07/2024

Disclaimer

Whilst every care has been taken in the preparation of these specifications, no guarantee is given or implied as to their accuracy. These particulars are intended only as a guide and they do not constitute a term of any contract. Lakeland Leisure Estates Ltd advises prospective purchasers to obtain an independent survey from a qualified Marine Surveyor to satisfy themselves as to the condition of the craft.

Contact Us

Call: 07748036638

Email: saul@lakelandleisureboatsales.co.uk

www.lakelandleisureboatsales.co.uk

